

Giving Matters

St. Jude Memorial Foundation Donor Newsletter



“THANK YOU FROM
THE BOTTOM
OF OUR HEARTS”

Words of Gratitude from Cardiac Rehab

I cannot begin to describe the immense gratitude and honor that our team feels toward the grateful patients who recently made philanthropic contributions in support of our cardiac rehabilitation program.

Thanks to their caring generosity, we were afforded the opportunity to upgrade our exercise equipment for the cardiac rehab gym, including treadmills, upright bikes and recumbent bikes.

Offering our patients access to top-grade equipment is a necessary component of their recovery and overall cardiac wellness. Recumbent bikes will be particularly valuable in facilitating exercise in patients with orthopedic and physical limitations.

Nothing gives me greater joy than seeing my patients get better with each session at our facility. Some have suffered major cardiac events, and some can hardly walk when they first enter our program.

The new equipment will not only help them regain their health more quickly — it will ease their way in recovery and

give them the motivation needed to continue maintaining a heart-healthy lifestyle, long after they graduate from our program.

Thank you, from the bottom of our hearts, for allowing us to help our patients achieve their health goals and improve their quality of life and well-being. We are forever grateful.

With gratitude,



Mel Leopoldo, MSN, CCRP
Clinical Coordinator

St. Jude Cardiac
Rehabilitation Program

Cardiac rehab donors try new equipment



Dick and Marian Joe
(John H. Grace Foundation)



John and Jeanette Svet



Joseph Lawton, MD and
Joanna Lawton

Fueling Excellence in Cancer Care

**New breakthroughs. New advances.
Increased survivability.**

All made possible through the philanthropic support of grateful patients and community members who recognize the magnitude of having world class cancer care available right in their own backyard.

We are eternally indebted to the donors — past and present — of our nationally-recognized St. Jude Crosson Cancer Institute. Whether you helped build our state-of-the-art facilities, funded innovations in treatment and technology, or expanded our uniquely comprehensive range of support services — your gifts empower our clinicians to stack the odds in each patient's favor.



Crossing the Finish Line on the Road to 3D Mammography



St. Jude is on the final leg of its journey to make 3D mammography a reality for every woman who comes through its breast center — and now two generous families are doubling the speed to get us across the finish line.

With 86 percent of the project goal raised to date, community members Olga Denton-Kwok and Wo Kong Kwok, PhD, and Anna and Bill Walsh, have issued a combined \$150,000 Challenge Gift to help expedite St. Jude's transition to this breakthrough technology in early breast cancer detection.

"Regardless of your health or family history, or whether you are a man or woman, everyone knows someone who will benefit from 3D mammography," says Dr. Kwok. "It's a matter of women's health and safety, and that's something we can all get behind."

The Challenge Gift will double the impact of every new gift received toward the \$4.1 million project, up to \$150,000. While two 3D mammography units are already in place thanks to early donations to the project, the Challenge Gift will help complete the acquisition of the remaining four units needed to serve all 30,000 women receiving mammograms each year at St. Jude.



"Since using the first two 3D units, we have already caught several masses which would not have presented on a traditional 2D scan," says Brenna Chalmers, MD, a board-certified diagnostic radiologist who specializes in women's imaging at the St. Jude Kathryn T. McCarty Breast Center. "Having all six units will give every patient immediate access to 3D mammography, reduce anxiety-provoking callbacks for additional imaging, and help us catch cancer at its earliest, most treatable stage."

86% Achieved.
\$3.53M Raised.
\$570,000 to Go.

Double your impact and give to the Challenge today by calling (714) 992-3033 or visiting **donate.stjudemedicalcenter.org**.

Spotlighting St. Jude's New Infusion Center



After much eager anticipation, St. Jude's Virginia K. Crosson Infusion Center has re-opened in a brand new space in the Medical Plaza. With a footprint nearly twice as large as its previous location, the new center features 27 infusion stations with individual TVs, three private rooms, a volunteer-staffed resource center, new pharmacy, specially trained nurses and access for each patient to watch movies, listen to music, dim their lighting and enjoy light snacks.

Golfing for Women's Health



St. Jude's 42nd Annual Golf Classic raised more than \$147,000, pushing St. Jude closer to its goal of fully transitioning its breast center to state-of-the-art 3D mammography. We are grateful to the 200 golfers and volunteers who joined us for a fun-filled day in support of women's health. Visit St. Jude Memorial Foundation's Facebook page to view photos.

Philanthropy in a Flash ⚡

For your gift of time, treasure and talent, we extend our heartfelt thanks to:



Fullerton Union High School Women's Soccer team, which donated \$1,300 through their "Kick Cancer Night" fundraiser.



St. Jude student volunteers who organized the ShowCare Music & Talent Competition, raising \$26,000 to provide health services for the community's most vulnerable.



Supporters of our Neighbors Helping Neighbors dinner, which raised \$130,000 to support St. Jude's Care for the Poor Program.



The 500 patients who recognized St. Jude physicians through donations and notes of appreciation in honor of National Doctors' Day.



Community friends who hosted a game night and donated their winnings to the Kathryn T. McCarty Breast Center.



Supporters Doreen Dann and Barbara Miller for hosting a gathering of past and current caregivers that raised \$2,000 toward our Sister Jane Frances Nursing Scholarship.

Artistic Legend Leaves a Creative Impact on St. Jude

Longtime Fullerton resident, Dwight "Richard" Odle, led a successful 52-year career as a theatrical designer, university professor, publicist, art director and special event producer. Upon his passing last year, Richard blessed his hometown with another expression of his legacy — a bequest gift to support patient care at St. Jude Medical Center.

The generous estate gift was made in honor of his parents, including his mother, Pearl, who was treated at St. Jude after suffering a stroke in 2011. Richard's devotion to supporting local causes and his gratitude for the compassionate care received by his mother inspired his gift to ensure future patients have access to the highest quality of care.

In addition to naming St. Jude as a beneficiary of his estate, Richard left a vast collection of Hollywood movie costume sketches done by legendary designers such as Edith Head and Cecil Beaton. These will be auctioned off by Profiles in History, with the proceeds also benefiting St. Jude.



Richard's magnificent artistry and caring heart enriched the lives of so many over his lifetime. Thanks to his heartfelt gift to St. Jude, countless more will continue to be touched by his generous spirit and remarkable legacy for years to come.





You too can create a permanent legacy of giving. Contact Tony Truong at (714) 446-5857 to find the right option for you.

Featured Inside

- Words of Gratitude from Cardiac Rehab
- A Challenge Gift Doubles Dollars for 3D Mammography
- Golf Classic Update
- Local Theatre Figure Leaves Legacy at St. Jude

Contact Us

St. Jude Memorial Foundation
1440 N. Harbor Blvd., Suite 200
Fullerton, CA 92835
(714) 992-3033 • SJMF@stjoe.org

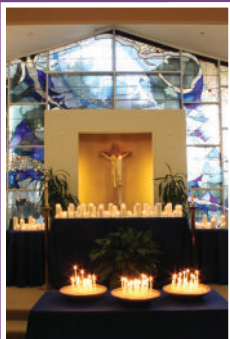
 stjudemedicalcenter.org/foundation
 facebook.com/stjudememorialfoundation

Photos from Donor Appreciation Dinner now posted!



News Flash: The Centers for Medicare & Medicaid Services (CMS) released its latest hospital quality ratings and St. Jude Medical Center is one of just 293 hospitals in the nation — and the only hospital in Orange County — to earn the top rating of five stars.

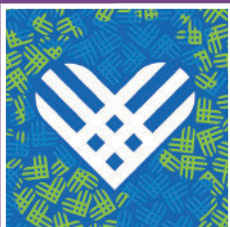
Save the Date



Light Up a Life: Celebration of Love and Remembrance

November 2019
St. Jude Medical Center Chapel

During this month of remembrance, you are invited to commemorate the life of a loved one by making a meaningful gift in their honor, or taking part in a special candle lighting ceremony in St. Jude's chapel. To learn more, visit donate.stjudemedicalcenter.org/LUAL.



#GivingTuesday

December 3, 2019
donate.stjudemedicalcenter.org
Join the world in this international day of charitable giving.

*A walk
among the*
Stars

30TH ANNIVERSARY
Dinner, Fashion Show & Dancing
Starring cancer patients and survivors

Join us for this Semi-Formal
Evening Celebration on
November 16, 2019

Anaheim Marriott
Supporting St. Jude's
Crosson Cancer Institute